

June 2025 Activities

Theme: Senses



To book visit www.thomley.org.uk

Sunday	Monday	Tuesday	Wednesday	Thursday	Friday	Saturday
1st June Disability Quiet Day Workshops/Physical: 11am- Deep breathing bubble snakes 1:30pm- Sensory walk Art: Senses hand craft, colouring and junk modelling	2nd Closed	3rd 13+ Day Workshops/Physical: 11am- Regulation toolkits 1:30pm- Follow the sound 2.30pm – Gardening club Art: Sensory foot mat craft, colouring and junk modelling	4th Preschool Day Workshops/Physical: 11am- Cooking- Temperature testing - pancakes 1:30pm- Sensory obstacle course Art: Sensory sheep craft, colouring and junk modelling	5th 13+ Day Workshops/Physical: 11am- Cooking –Bread making part 1 1pm – Bread making part 2 1:30pm- Sound maze 2.30pm – Gardening club Art: Rainbow craft, colouring and junk modelling	6th Open for all Workshops/Physical: 11am- Cooking –Hot or cold – pancake preferences 1:30pm- Obstacles with senses Art: 5 Senses craft (taste), colouring and junk modelling	7th Disability Family Day Workshops/Physical: 11am- Relaxation and breathing session 1:30pm- Football skills Art: Make a face craft, colouring and junk modelling
8th Father's Day Meal Meal, access to our facilities, and fun Father's Day themed activities. Book online now!	9th Closed	10th 13+ Day Workshops/Physical: 11am- Sensory investigation 1:30pm- Giant bubbles 2.30pm – Gardening club Art: Scented paints craft, colouring and junk modelling	11th Preschool Day Workshops/Physical: 11am- Cooking – Texture taste testing 1:30pm- Sensory trail Art: Potato head craft, colouring and junk modelling	12th 13+ Day Workshops/Physical: 11am- Cooking – Taste exploration 1:30pm- Giant bubbles 2.30pm – Gardening club Art: Texture collage craft, colouring and junk modelling	13th Open for all Workshops/Physical: 11am- Cooking – Feel it, taste it, texture challenge 1:30pm- Sensory walk Art: Mystery tubes craft, colouring and junk modelling	14th Disability Family Day Workshops/Physical: 11am- Cooking – Smoothie flavour creations 1:30pm- Sports day races Art: Puppet craft, colouring and junk modelling
15th Closed	16th Closed	17th Thomley CLOSED for a private function.	18th Preschool Day Workshops/Physical: 11am- Cooking – Rainbow cookies 1:30pm- Parachute games Art: Hand shape senses craft, colouring and junk modelling	19th 13+ Day Workshops/Physical: 11am- Cooking – Honey flapjacks 1:30pm- Blindfolded communication game 2.30pm – Gardening club Art: Bubble wrap feet craft, colouring and junk modelling	20th Open for all Workshops/Physical: 11am- Cooking – Colour splash cookies 1:30pm- Parachute shapes Art: Cup & cord phone craft, colouring and junk modelling	21st Disability Family Day Workshops/Physical: 11am- Sensory investigation 1:30pm- Sumo suits Art: My 5 senses craft, colouring and junk modelling
Disability Family Day: For children with a disability, their family and friends Open for all: For all children with or without a disability up to 18 years Disability Quiet Day: For children with a disability, their family and friends. Spaces limited to 40 children Preschool Day: Open to all children under 6 with or without a disability Schools: Can come on any of the focus days above (age restrictions apply) 13+ Day: Open to all teenagers and adults with a disability aged 13+ Disability For All Day: For all disabled people including disability/ respite groups.	23rd Closed	24th 13+ Day Workshops/Physical: 11am- Thomley challenge 1:30pm- Orienteering blindfolded 2.30pm – Gardening club Art: Senses headband craft, colouring and junk modelling	25th Preschool Day Workshops/Physical: 11am- Cooking – Ice pop flavours 1:30pm- What's in the box Art: My body craft, colouring and junk modelling	26th 13+ Day Workshops/Physical: 11am- Cooking – Porridge flavours 1:30pm- Blindfolded orienteering 2.30pm – Gardening club Art: Emotion hands craft, colouring and junk modelling	27th Open for all Workshops/Physical: 11am- Cooking – Milkshake ice pops 1:30pm- Texture boxes Art: Potato printing craft, colouring and junk modelling	28th Thomley CLOSED for a private function
	30th Closed	Youth Club, for teenagers aged 13+ 6.30-8.30pm £6 per person Parents remain on site but not part of the club	Cooking Club, for adults of all abilities 5:30pm – 7:30pm. £12 per person, inclusive of food.			

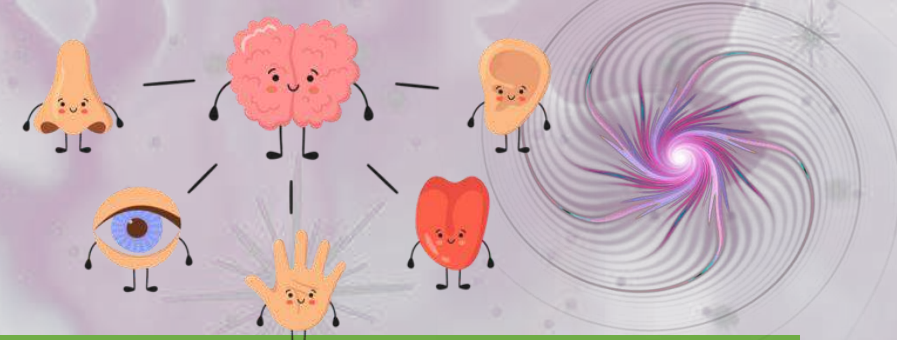
Please book online: www.thomley.org.uk

July 2025 Activities



Theme: Senses

To book visit www.thomley.org.uk



Sunday	Monday	Tuesday	Wednesday	Thursday	Friday	Saturday
<p>Youth Club, for teenagers aged 13+ 6.30-8.30pm £6 per person Parents remain on site but not part of the club</p> <p>Please book online: www.thomley.org.uk</p>	<p>Cooking Club, for adults of all abilities 5:30pm – 7:30pm. £12 per person, inclusive of food.</p> <p>Yoga with Jess @1pm</p>	<p>1st July</p> <p>13+ Day</p> <p>Workshops/Physical: 11am- Sensory – what's in the box? 1:30pm- Bike riding practice 2.30pm - Gardening club Art: Collage eyes, colouring and junk modelling</p>	<p>2nd</p> <p>Preschool Day</p> <p>Workshops/Physical: 11am- Cooking –Edible chocolate playdough 1:30pm- Animal movements Art: Handprint feelings, colouring and junk modelling</p>	<p>3rd</p> <p>13+ Day</p> <p>Workshops/Physical: 11am- Cooking –Bagel pizzas 1:30pm- Sensory walk 2.30pm - Gardening club Art: Collage of the eye, colouring and junk modelling</p>	<p>4th</p> <p>Thomley is closed today in preparation for our festival</p>	<p>5th</p> <p>Accessival Festival</p>
		<p>8th</p> <p>13+ Day</p> <p>Workshops/Physical: 11am- Motor skills – target practice. 1:30pm- Bird husbandry 2.30pm - Gardening club Art: Sensory balloons, colouring and junk modelling</p>	<p>9th</p> <p>Preschool Day</p> <p>Workshops/Physical: 11am- Sensory – Popcorn game 1:30pm- Mud kitchen mess Art: Senses puppets, colouring and junk modelling</p>	<p>10th</p> <p>13+ Day</p> <p>Workshops/Physical: 11am- Cooking –Banana sushi 1:30pm- Disco rave 2.30pm - Gardening club Art: Texture balloons, colouring and junk modelling</p>	<p>11th</p> <p>Open for all</p> <p>Workshops/Physical: 11am- Sensory Jars 1:30pm- Assault course Art: Senses sticks, colouring and junk modelling</p>	<p>12th</p> <p>Quiet Day</p> <p>Workshops/Physical: 11am- Glitter tattoos 1:30pm- Massage Art: Rain shakers, colouring and junk modelling</p>
<p>13th</p> <p>Thomley closed for a private function.</p>	<p>14th</p> <p>Closed</p>	<p>15th</p> <p>13+ Day</p> <p>Workshops/Physical: 11am- Sensory – Hoops game 1:30pm- Yoga 2.30pm - Gardening club Art: Spice painting, colouring and junk modelling</p>	<p>16th</p> <p>Preschool Day</p> <p>Workshops/Physical: 11am- Sensory snacks, salty/sweet/sour 1:30pm- Sand castle making Art: Shaving foam painting, colouring and junk modelling</p>	<p>17th</p> <p>13+ Day</p> <p>Workshops/Physical: 11am- Cooking – Cheese & ham skewers 1:30pm- Yoga 2.30pm - Gardening club Art: Sensory spice pictures, colouring and junk modelling</p>	<p>18th</p> <p>Open for all</p> <p>Workshops/Physical: 11am- Giant Bubbles 1:30pm- Parachute games Art: Foam painting, colouring and junk modelling</p>	<p>19th</p> <p>Disability Family Day</p> <p>Workshops/Physical: 11am- Tye & Dye 1:30pm- Jumping pillow games Art: Coffee granule painting, colouring and junk modelling</p>
<p>20th</p> <p>Closed</p>	<p>21st</p> <p>Closed</p>	<p>22nd</p> <p>13+ Day</p> <p>Workshops/Physical: 11am- Sensory – Match the pompoms game 1:30pm- Sensory dough making Art: Scented tea bag art, colouring and junk modelling</p>	<p>23rd</p> <p>Preschool Day</p> <p>Workshops/Physical: 11am- Cooking – Rainbow milk toast 1:30pm- Feed the chickens and ducks Art: My five senses, colouring and junk modelling</p>	<p>24th</p> <p>Open for all</p> <p>Workshops/Physical: 11am- Cooking – Pizza quesadillas 1:30pm- Cloud dough creations 2pm –School's out disco Art: Berry nice tea pictures, colouring and junk modelling</p>	<p>25th</p> <p>Thomley Birthday Party – 25 years!</p> <p>GARDEN PARTY</p>	<p>26th</p> <p>Disability Family Day</p> <p>Workshops/Physical: 11am- Cooking – Marshmallow, strawberry and banana lolly 1:30pm- Parachute games 2pm – Bubble party Art: Pasta art, colouring and junk modelling</p>
<p>27th</p> <p>Quiet Day</p> <p>Workshops/Physical: 11am- Foam machine 1:30pm- Slime making 2pm – Accessible sports day Art: Tea and coffee art, colouring and junk modelling</p>	<p>28th</p> <p>Open for all</p> <p>Workshops/Physical: 11am- Cooking – Apple fruit doughnuts 2pm – Nature bracelets Art: Frozen scented paint sticks, colouring and junk modelling</p>	<p>29th</p> <p>Disability Family Day</p> <p>Workshops/Physical: 11am- Sensory – Match the emoji game 1:30pm- Sensory massage 2pm – Floor is lava Art: Make a face, colouring and junk modelling</p>	<p>30th</p> <p>Disability For All</p> <p>Workshops/Physical: 11am- Cooking – Apple Dippers 1:30pm- Slime fun 2pm – Bubble snakes Art: Fizzy painting, colouring and junk modelling</p>	<p>31st</p> <p>13+ Day</p> <p>Workshops/Physical: 11am- Cooking – Ham & Cheese pinwheels 1:30pm- Sensory massage Art: Handprint feelings, colouring and junk modelling</p>	<p>Accessival</p> <p>Accessible Festival for the whole community</p> <p>Saturday 5th July 2025</p> <p>11am-10pm</p> <p>Music – beer- food - play</p>	